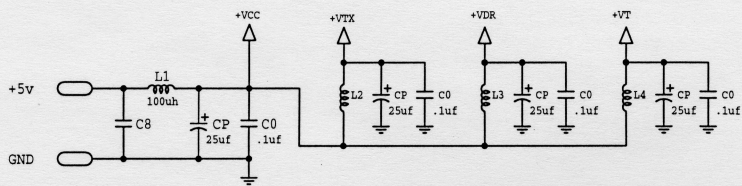


LM1-LM8 (Rear Panel): Local INPUT/OUTPUT (TTL @ 50 ohm)



NOTE:
 * = unused I/O pins.
 C0 = Bypass capacitor 0.1 uF,
 CP = Polar. capacitor 25 uF,
 L2-L9 = Inductor, ferrite beads

CONTRACT NO.		APPROVALS		DATE		BURST MODE FIBER OPTIC REPEATER	
DRAWN		V. RYTCHENKOV		16/12/94		BMR	
DESIGNED				SHEET NO.		Dwg. NO.	
ISSUED				D		REV.	
		SCALE				SHEET	