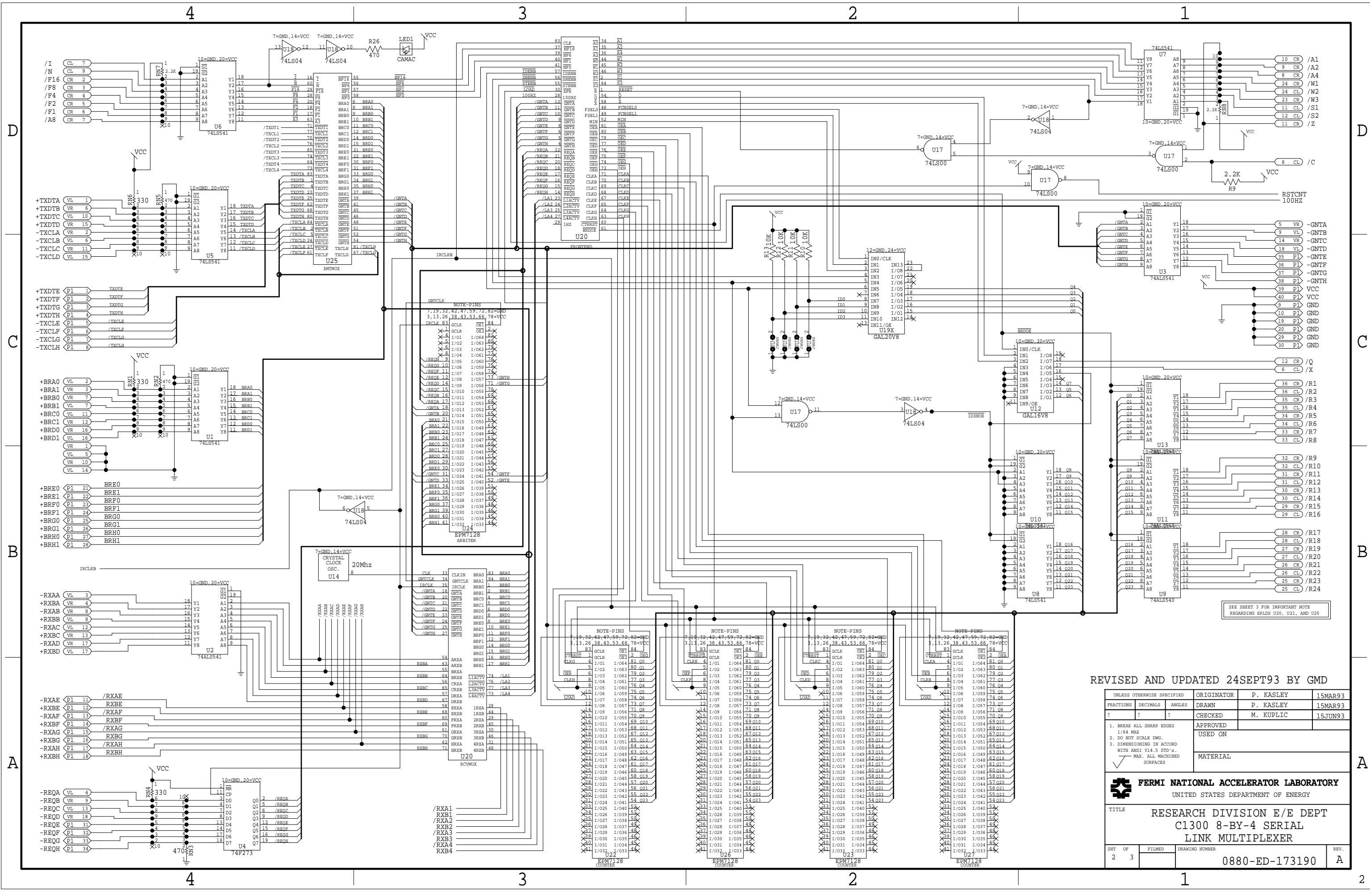


REVISED AND UPDATED 24SEPT93 BY GMD

| UNLESS OTHERWISE SPECIFIED | | | ORIGINATOR | P. KASLEY | 15MAR93 |
|--|----------|--------|------------|-----------|---------|
| FRACTIONS | DECIMALS | ANGLES | DRAWN | P. KASLEY | 15MAR93 |
| + | + | + | CHECKED | M. KUPLIC | 15JUN93 |
| 1. BREAK ALL SHARP EDGES 1/64 MAX | | | APPROVED | | |
| 2. DO NOT SCALE DWG. | | | USED ON | | |
| 3. DIMENSIONING IN ACCORD WITH ANSI Y14.5 STD.'s. | | | MATERIAL | | |
| ✓ MAX. ALL MACHINED SURFACES | | | | | |

| | | | |
|---|----|--------|----------------|
| FERMI NATIONAL ACCELERATOR LABORATORY UNITED STATES DEPARTMENT OF ENERGY | | | |
| TITLE RESEARCH DIVISION E/E DEPT C1300 8-BY-4 SERIAL LINK MULTIPLEXER | | | |
| SHT | OF | FILMED | DRAWING NUMBER |
| 1 | 3 | | 0880-ED-173190 |
| | | | REV. A |



NOTE-PINS
7, 19, 32, 42, 47, 59, 72, 82=GND
3, 13, 26, 38, 43, 53, 66, 78=VCC

| IN | OUT |
|-------|-----|
| IRCLK | 84 |
| OCLR | 80 |
| 1/01 | 80 |
| 1/03 | 78 |
| 1/04 | 77 |
| 1/05 | 76 |
| 1/06 | 75 |
| 1/07 | 74 |
| 1/08 | 73 |
| 1/09 | 72 |
| 1/010 | 71 |
| 1/011 | 70 |
| 1/012 | 69 |
| 1/013 | 68 |
| 1/014 | 67 |
| 1/015 | 66 |
| 1/016 | 65 |
| 1/017 | 64 |
| 1/018 | 63 |
| 1/019 | 62 |
| 1/020 | 61 |
| 1/021 | 60 |
| 1/022 | 59 |
| 1/023 | 58 |
| 1/024 | 57 |
| 1/025 | 56 |
| 1/026 | 55 |
| 1/027 | 54 |
| 1/028 | 53 |
| 1/029 | 52 |
| 1/030 | 51 |
| 1/031 | 50 |
| 1/032 | 49 |

NOTE-PINS
7, 19, 32, 42, 47, 59, 72, 82=GND
3, 13, 26, 38, 43, 53, 66, 78=VCC

| IN | OUT |
|-------|-----|
| IRCLK | 84 |
| OCLR | 80 |
| 1/01 | 80 |
| 1/03 | 78 |
| 1/04 | 77 |
| 1/05 | 76 |
| 1/06 | 75 |
| 1/07 | 74 |
| 1/08 | 73 |
| 1/09 | 72 |
| 1/010 | 71 |
| 1/011 | 70 |
| 1/012 | 69 |
| 1/013 | 68 |
| 1/014 | 67 |
| 1/015 | 66 |
| 1/016 | 65 |
| 1/017 | 64 |
| 1/018 | 63 |
| 1/019 | 62 |
| 1/020 | 61 |
| 1/021 | 60 |
| 1/022 | 59 |
| 1/023 | 58 |
| 1/024 | 57 |
| 1/025 | 56 |
| 1/026 | 55 |
| 1/027 | 54 |
| 1/028 | 53 |
| 1/029 | 52 |
| 1/030 | 51 |
| 1/031 | 50 |
| 1/032 | 49 |

NOTE-PINS
7, 19, 32, 42, 47, 59, 72, 82=GND
3, 13, 26, 38, 43, 53, 66, 78=VCC

| IN | OUT |
|-------|-----|
| IRCLK | 84 |
| OCLR | 80 |
| 1/01 | 80 |
| 1/03 | 78 |
| 1/04 | 77 |
| 1/05 | 76 |
| 1/06 | 75 |
| 1/07 | 74 |
| 1/08 | 73 |
| 1/09 | 72 |
| 1/010 | 71 |
| 1/011 | 70 |
| 1/012 | 69 |
| 1/013 | 68 |
| 1/014 | 67 |
| 1/015 | 66 |
| 1/016 | 65 |
| 1/017 | 64 |
| 1/018 | 63 |
| 1/019 | 62 |
| 1/020 | 61 |
| 1/021 | 60 |
| 1/022 | 59 |
| 1/023 | 58 |
| 1/024 | 57 |
| 1/025 | 56 |
| 1/026 | 55 |
| 1/027 | 54 |
| 1/028 | 53 |
| 1/029 | 52 |
| 1/030 | 51 |
| 1/031 | 50 |
| 1/032 | 49 |

NOTE-PINS
7, 19, 32, 42, 47, 59, 72, 82=GND
3, 13, 26, 38, 43, 53, 66, 78=VCC

| IN | OUT |
|-------|-----|
| IRCLK | 84 |
| OCLR | 80 |
| 1/01 | 80 |
| 1/03 | 78 |
| 1/04 | 77 |
| 1/05 | 76 |
| 1/06 | 75 |
| 1/07 | 74 |
| 1/08 | 73 |
| 1/09 | 72 |
| 1/010 | 71 |
| 1/011 | 70 |
| 1/012 | 69 |
| 1/013 | 68 |
| 1/014 | 67 |
| 1/015 | 66 |
| 1/016 | 65 |
| 1/017 | 64 |
| 1/018 | 63 |
| 1/019 | 62 |
| 1/020 | 61 |
| 1/021 | 60 |
| 1/022 | 59 |
| 1/023 | 58 |
| 1/024 | 57 |
| 1/025 | 56 |
| 1/026 | 55 |
| 1/027 | 54 |
| 1/028 | 53 |
| 1/029 | 52 |
| 1/030 | 51 |
| 1/031 | 50 |
| 1/032 | 49 |

SEE SHEET 3 FOR IMPORTANT NOTE REGARDING SPLDS U20, U21, AND U25

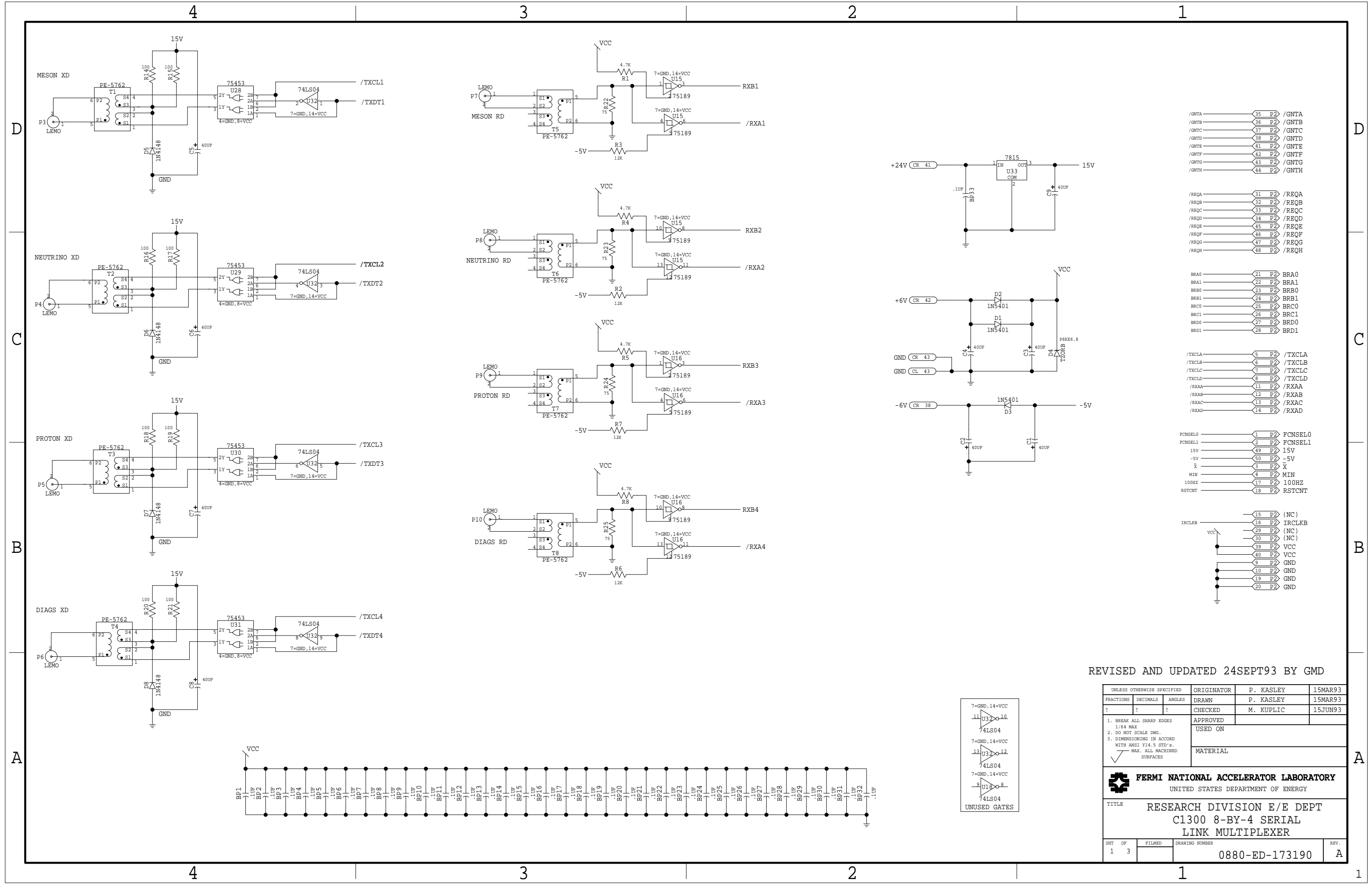
REVISED AND UPDATED 24SEPT93 BY GMD

| | | | |
|----------------------------|------------|-----------|-----------|
| UNLESS OTHERWISE SPECIFIED | ORIGINATOR | P. KASLEY | 15MAR93 |
| FRACTIONS | DECIMALS | ANGLES | DRAWN |
| ± | ± | ± | CHECKED |
| | | APPROVED | M. KUPLIC |
| | | USED ON | 15JUN93 |
| | | MATERIAL | |

Fermi National Accelerator Laboratory
UNITED STATES DEPARTMENT OF ENERGY

TITLE: **RESEARCH DIVISION E/E DEPT
C1300 8-BY-4 SERIAL
LINK MULTIPLEXER**

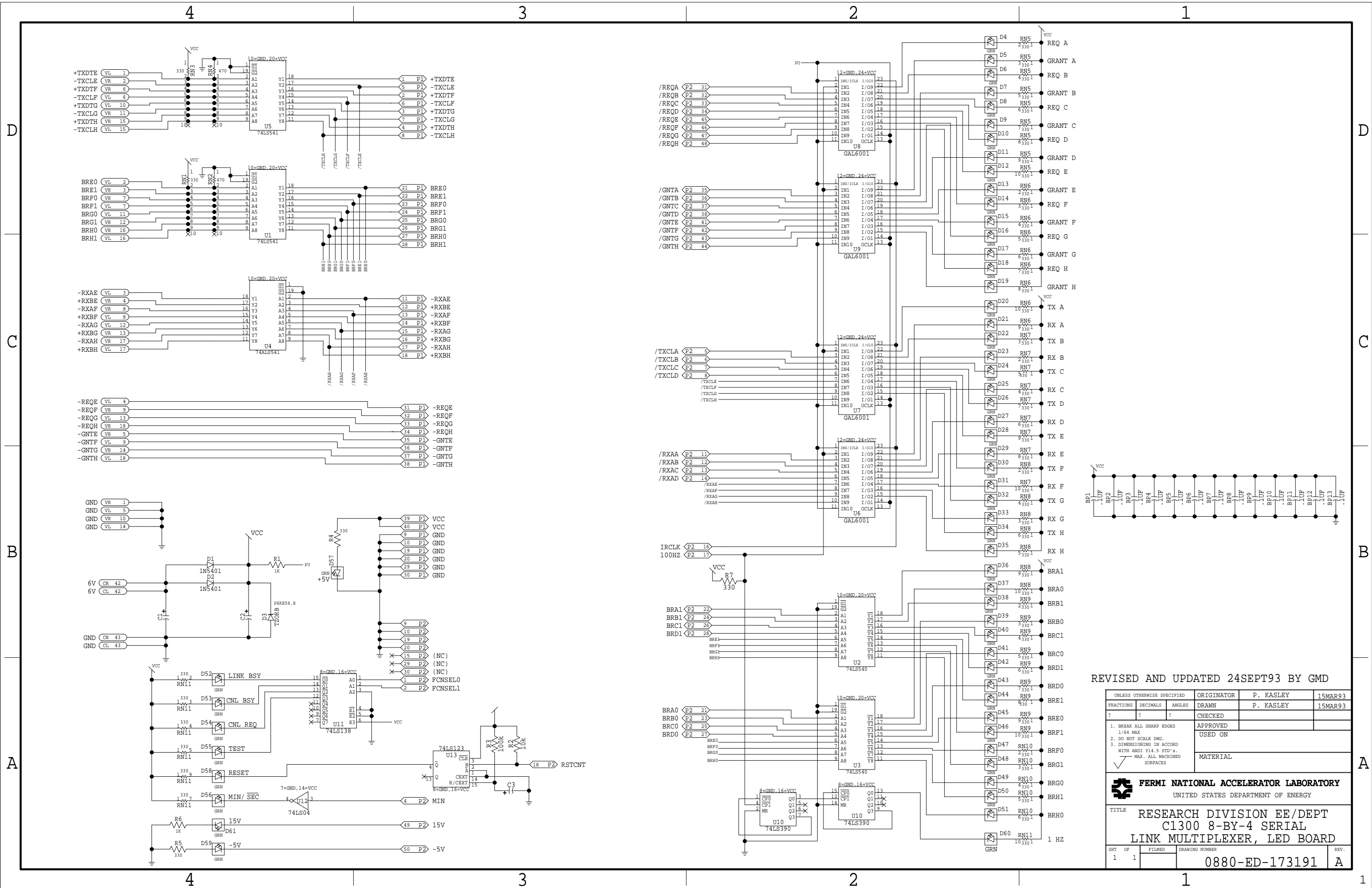
SHT OF 2 3 FILMED DRAWING NUMBER 0880-ED-173190 REV. A



REVISED AND UPDATED 24SEPT93 BY GMD

| | | | | | |
|--|----------|--------|------------|-----------|---------|
| UNLESS OTHERWISE SPECIFIED | | | ORIGINATOR | P. KASLEY | 15MAR93 |
| FRACTIONS | DECIMALS | ANGLES | DRAWN | P. KASLEY | 15MAR93 |
| + | + | + | CHECKED | M. KUPLIC | 15JUN93 |
| 1. BREAK ALL SHARP EDGES 1/64 MAX | | | APPROVED | | |
| 2. DO NOT SCALE DWG. | | | USED ON | | |
| 3. DIMENSIONING IN ACCORD WITH ANSI Y14.5 STD.'s. | | | MATERIAL | | |
| ✓ MAX. ALL MACHINED SURFACES | | | | | |

| | | | |
|---|----|--------|----------------|
| FERMI NATIONAL ACCELERATOR LABORATORY UNITED STATES DEPARTMENT OF ENERGY | | | |
| TITLE RESEARCH DIVISION E/E DEPT C1300 8-BY-4 SERIAL LINK MULTIPLEXER | | | |
| SHT | OF | FILMED | DRAWING NUMBER |
| 1 | 3 | | 0880-ED-173190 |
| | | | REV. A |



REVISED AND UPDATED 24SEPT93 BY GMD

| UNLESS OTHERWISE SPECIFIED | | ORIGINATOR | P. KASLEY | 15MAR93 |
|---|----------|----------------|-----------|-----------|
| FRACTIONS | DECIMALS | ANGLES | DRAWN | P. KASLEY |
| 1 | 1 | 1 | CHECKED | 15MAR93 |
| 1. BREAK ALL SHARP EDGES 1/64 MAX | | APPROVED | | |
| 2. DO NOT SCALE DWG. | | USED ON | | |
| 3. DIMENSIONING IN ACCORD WITH ANSI V14.5 STD.* | | MATERIAL | | |
| *MAX. ALL MACHINED SURFACES | | | | |
| FERMI NATIONAL ACCELERATOR LABORATORY UNITED STATES DEPARTMENT OF ENERGY | | | | |
| TITLE RESEARCH DIVISION EE/DEPT C1300 8-BY-4 SERIAL LINK MULTIPLEXER, LED BOARD | | | | |
| SHT OF | FILMED | DRAWING NUMBER | | REV. |
| 1 | 1 | 0880-ED-173191 | | A |