

Triple resistor value such as 100/10k/51 is for three type of input signals: ECL/ECL_DIFF/TTL.

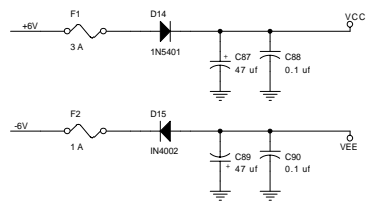
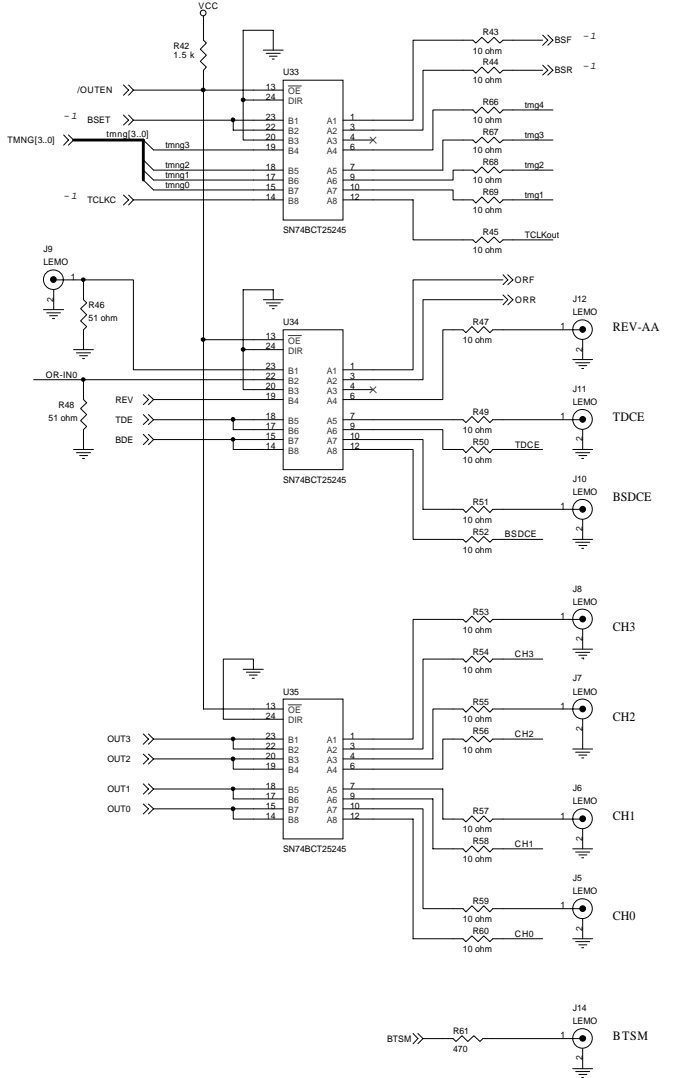
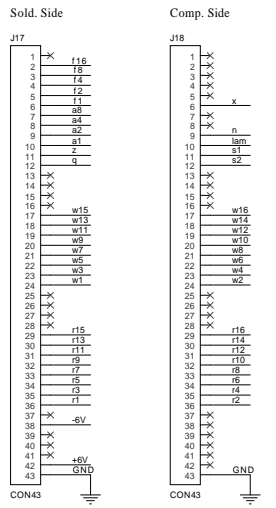
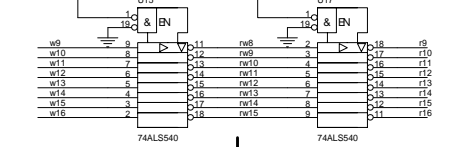
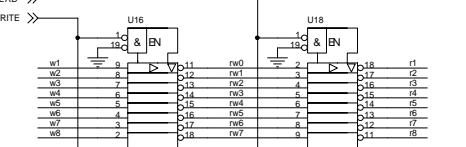
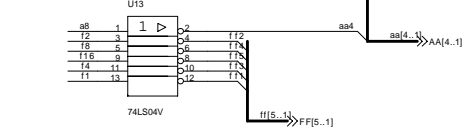
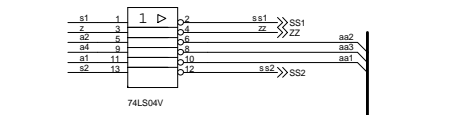
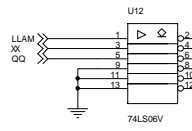
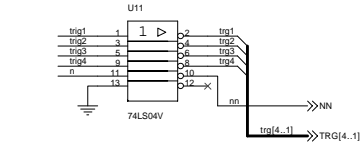
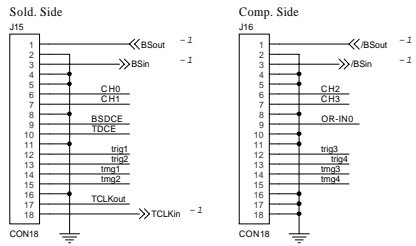
JP1
ECL Out disabled

JP4
TTL Out disabled

NOTES

Page connectors marked "2-" or "-2" connect nets to Page 2.
Page connectors without marks connect nets to Page 3.

166	CAMAC 479, 4-CH DECODER/TIMER	Rev
Size	Document Number	
C	<Doc>	
Date:	Wednesday, July 26, 1999	Sheet 1 of 4



NOTES
 Page connectors marked "1-" connect nets to Page 1.
 Page connectors without marks connect nets to Page 3.

Title			
CAMAC 479. 4-CH DECODER/TIMER			
Size	Document Number	Rev	
C	<Doc>	<Rev>	
Date:	Wednesday, July 28, 1999	Sheet	2 of 4

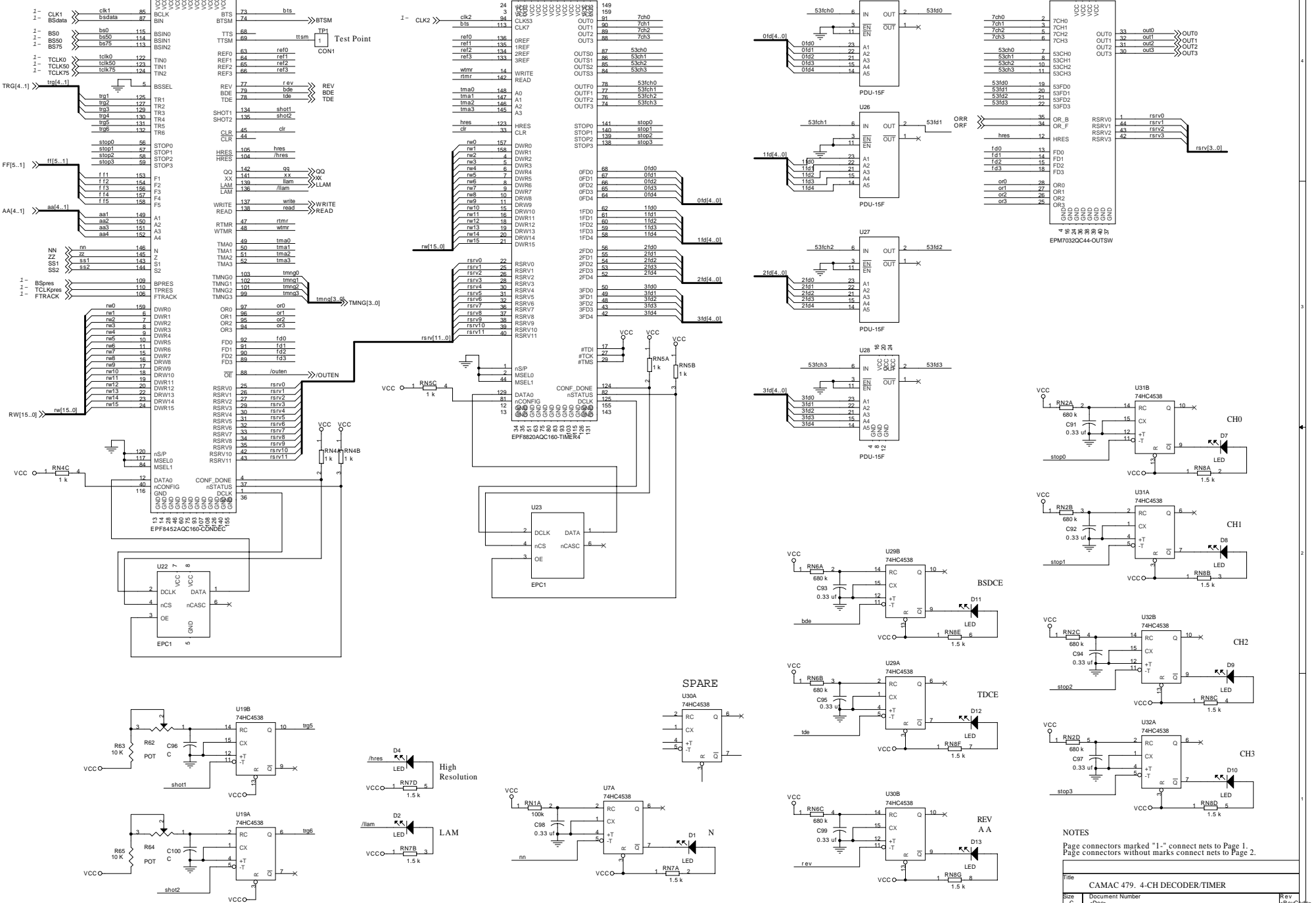
CONTROL/DECODER

TIMER

DELAYS

SWITCH

Dedicated input pins 5, 36 (not shown), 116 (not shown) of Q20 must be connected to GND.

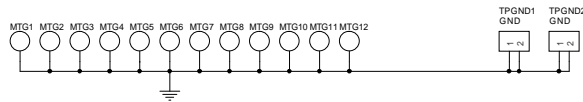
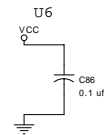
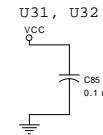
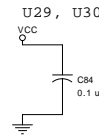
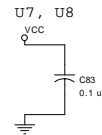
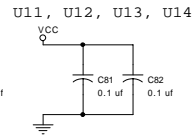
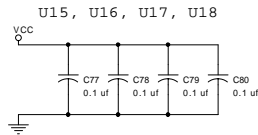
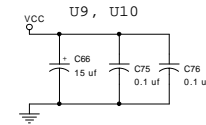
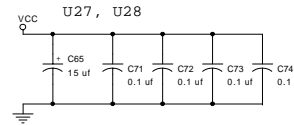
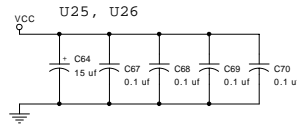
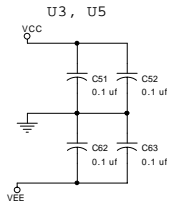
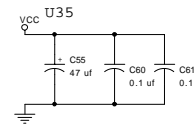
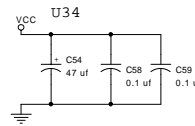
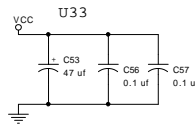
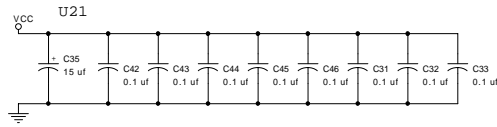
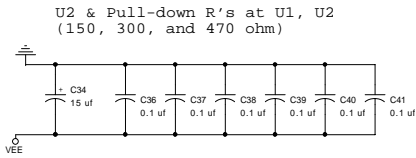
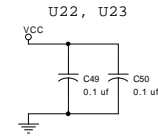
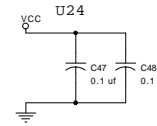
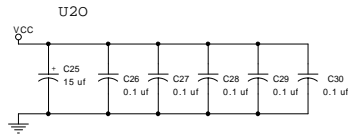
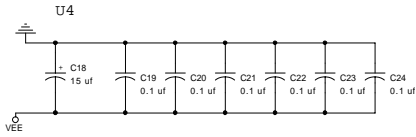


NOTES
Page connectors marked "1-" connect nets to Page 1.
Page connectors without marks connect nets to Page 2.

BYPASS CAPACITORS
(Locations shown)

VEE = -5.2 V

VCC = +5 V



Title		
CAMAC 479. 4-CH DECODER/TIMER		
Size	Document Number	Rev
C	<Doc>	<Rev>
Date:	Wednesday, July 28, 1999	Sheet 4 of 4